



# High brightness mirror monitor

User manual

CV-043ADM     CV-043ABM

# Table of contents

- Chapter One: Product introduction** . . . . . 2
  - Package . . . . . 2
  - Features . . . . . 2
  - Specification . . . . . 2
- Chapter Two: Installation and wire** . . . . . 3
  - Keyboard . . . . . 3
  - How to install high brightness mirror monitor . . . . . 5
  - Special bracket . . . . . 6
  - How to install reverse camera . . . . . 6
  - How to wire . . . . . 7
- Chapter Three: Basic functions** . . . . . 9
  - Back up camera display . . . . . 9
  - Brightness adjust automatically . . . . . 9
  - Glass and bracket . . . . . 10
- Chapter Four: Optional functions** . . . . . 11
  - Adjustable guide line . . . . . 11
  - Dimming . . . . . 13

# User's Manual

Welcome to use our high brightness Rearview mirror monitor

- We reserve the final explanation right on this User's Manual.
- Specifications are subject to change without notice. Sorry for any inconvenience caused!
- Please make a copy of the important data. We assume no responsibility for the data loss.
- This manual has been carefully checked. Please contact our service center when any typing mistake is found.
- Please read the operating instruction carefully and use the accessories only provided by the original factory to avoid any unexpected damage. No warranty will be executed if you are not following the instruction or connecting with the incompatible accessories, we assume no responsibility for any loss and damage caused hereby.
- Users can update and upgrade software from website at his/her option.
- Any discrepancy between the pictures with real products hereinafter, the real one prevails.

## Chapter one: Introduction

### Package

The packing box contains the following accessories, please confirm:

- Rearview mirror monitor
- wire rod
- User's manual
- wire cover
- remote control(option)

For the items listed above, please confirm the actual products. If any damage, Please contact with the distributor or the agent as soon as possible.

### Features

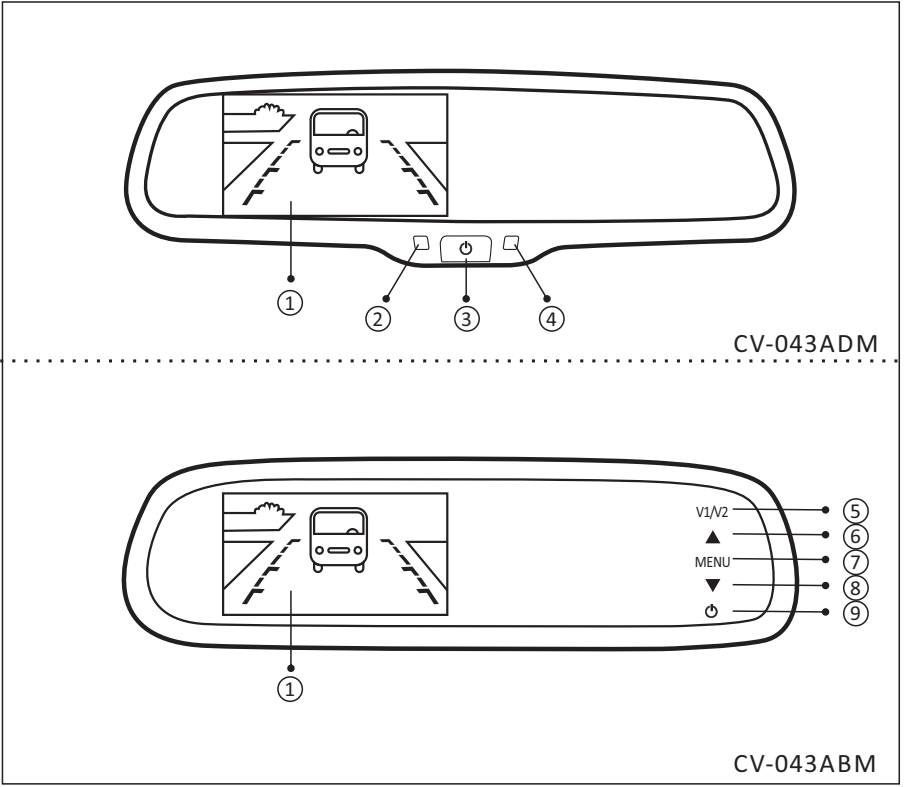
- Back up camera display
- Automatically brightness adjustable
- 4.0mm glass and 23mm OEM bracket
- Adjustable guide line (option)
- Compass and temperature (option)
- Parking sensor (option)
- Manual dimming (option)
- Auto dimming (option)

### Specification

Model number	Screen Size	Display Screen	Aspect Resolution	Color Depth	Working Voltage	Video Input	Signal System
CV-043ADM	4.3"	TFT-LCD	480(H) ×272(V)	16 : 9	DC 12V	VIDEO-IN to GPS /DVD (default) CAMERA to backup camera.	PAL/ AUTO/ NSTC
CV-043ABM	4.3"	TFT-LCD	480(H) ×272(V)	16 : 9	DC 12V	VIDEO-IN to GPS /DVD (default) CAMERA to backup camera.	PAL/ AUTO/ NSTC

# Chapter two: Installation and wire

## Keyboard



No.	Description
1	4.3 High brightness display screen
2	Light sensor
3	Mirror without auto-dimming function: video input: turn on/off the screen camera input: adjust the brightness of the screen image  Mirror with auto-dimming function: Video input: short press to turn on-off auto-dimming long press to turn on-off the screen. camera input: adjust brightness of the screen image
4	Mirror without auto-dimming function: When the screen turns off or doesn't have video signal, the indicator light will light up, conversely, it turn off . Mirror with auto-dimming function: when the auto-dimming activated, the indicator light will become light; conversely, it will turn off.
5	The V1/V2 button can switch the 2 video signal input, Press it can switch back and forth between the two video signals.
6	Up
7	Press the menu, which can adjust the brightness, contrast, color saturation of the screen, language of the system, and can switch on/off adjustable guide lines. All the default parameters are 50, you can adjust the parameters through the up and down buttons according to your preference.
8	Down
9	Turn on/off the screen

The menu tabs will automatically be hidden in 10seconds and lighted up again as soon as you press the touch buttons

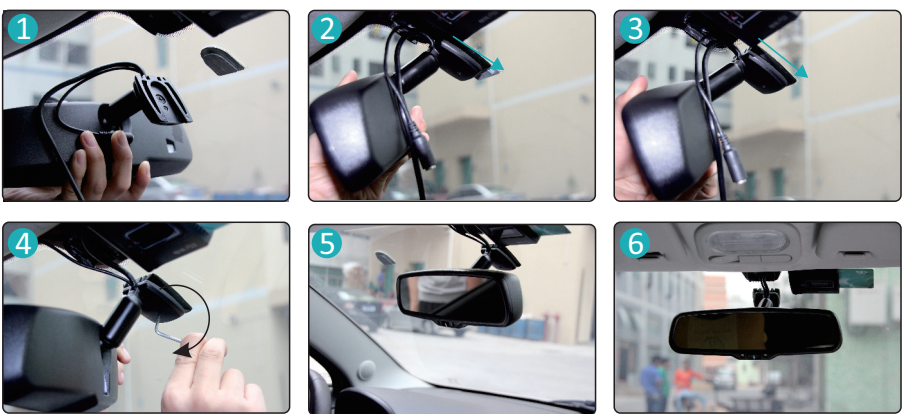
### How to install high brightness mirror monitor

#### Remove the original mirror



Different cars have different brackets, depending on your vehicle make and manufacturer. There are many methods for removing the original rear-view mirror, however please don't force the mirror off the bracket. The manufacturer will not be responsible for damage caused to your vehicle as a result of installation of this mirror monitor. This pack includes a number of multi brackets and options to assist you with the installation of the new mirror.

#### Install mirror monitor on the base



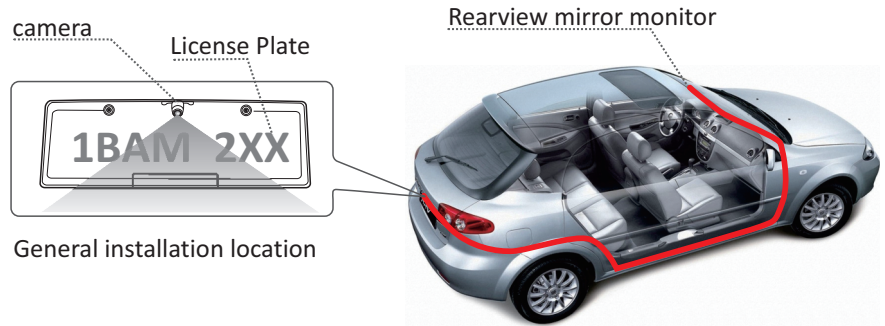
### Special bracket



We have many kinds of brackets are suitable for your car, and we are not going to go through anymore examples of that because the space is limited. If you don't find the same picture of the bracket here as your car, please contact us.

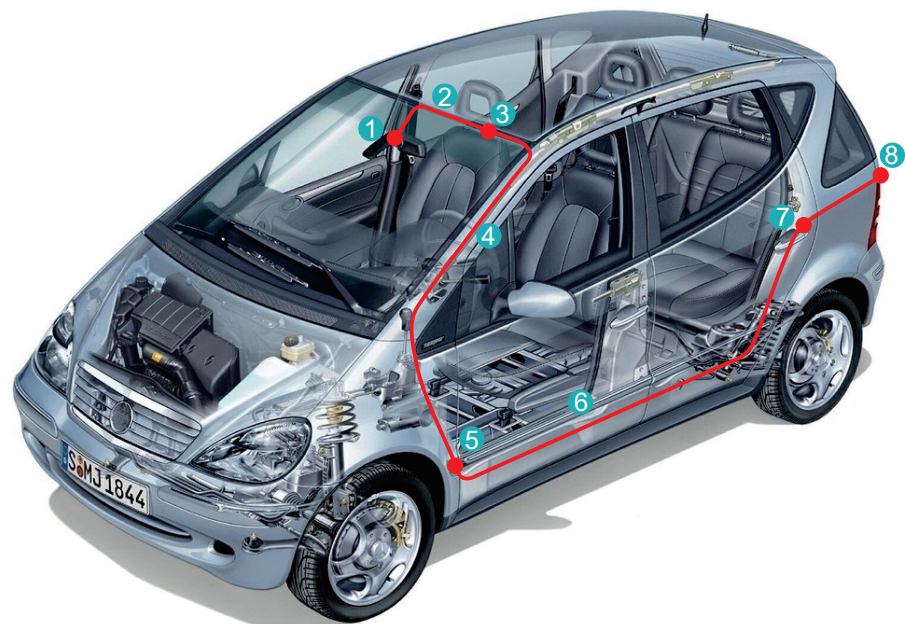
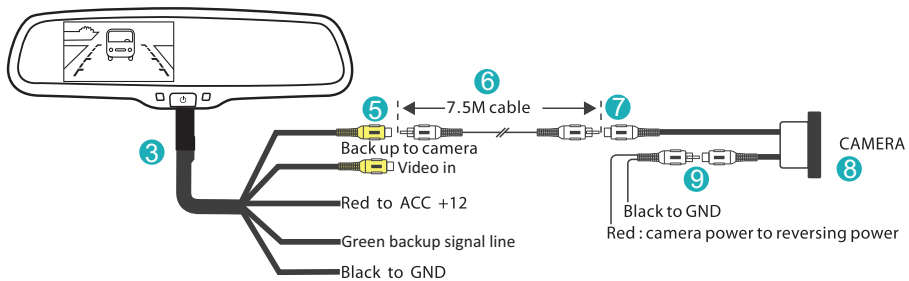
### How to Install Reverse Camera ( Optional – Not included )

When a camera is to be installed at the rear of vehicle, a good position is usually at the top of the License plate where there is an under ledge.

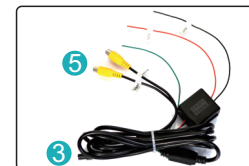


### How to wire

After the mirror is mounted, you need to run the cable along the roof lining and down the pillar so you can connect to Power and the rear view camera



rearview mirror monitor



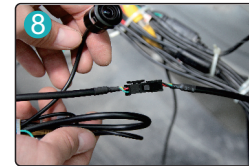
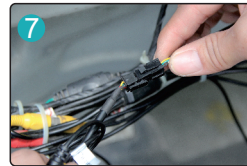
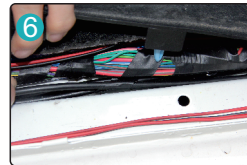
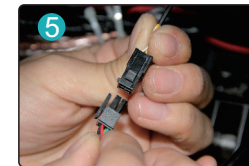
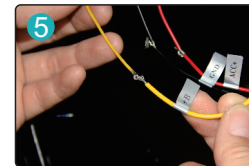
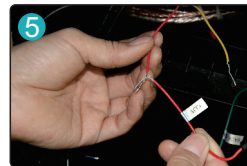
mirror monitor cable



Extension cable



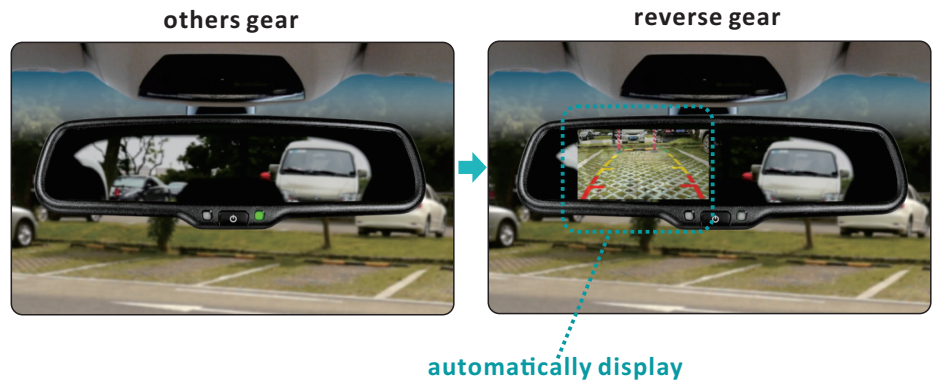
Camera (not included)



# Chapter Three: Basic functions

## 3.1 Back up camera display

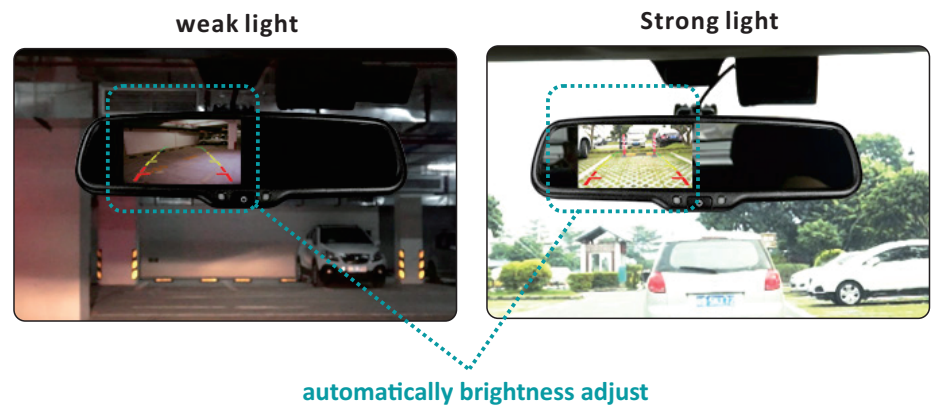
When the car is in reverse, the monitor will automatically display backup camera.



## 3.2 Brightness adjust automatically

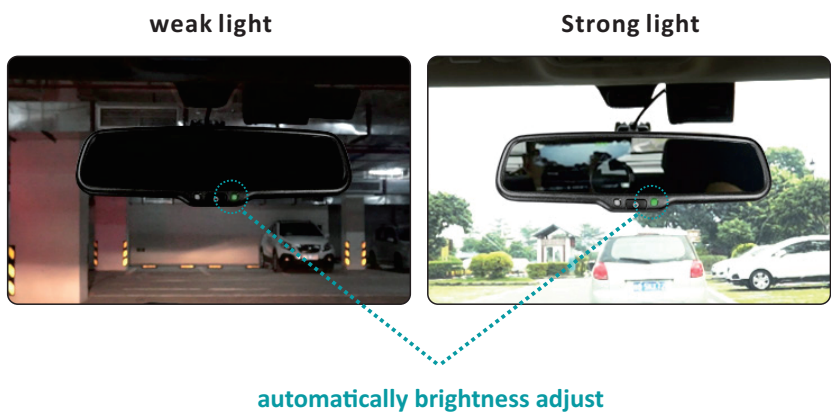
### 3.2.1 The screen brightness adjust automatically

The brightness of screen vary with ambient light, thereby, to make driver gets a clear and comfortable image when reversing.



### 3.2.2 The indicator automatically brightness adjust

The brightness of the green indicator light can vary with ambient light.



## 3.3 Glass and bracket

The thickness of our mirror's glass is 4mm. It is strong enough to bear impact and reach every country's safety standards on rearview mirror

OEM bracket for special rearview mirror monitor with thick pipe is 23mm.

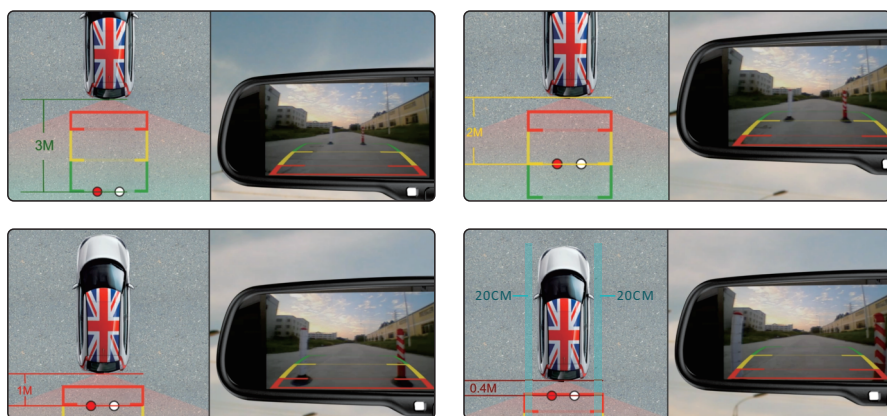


## Chapter Three: Optional functions

### 4.1 Adjustable guide line

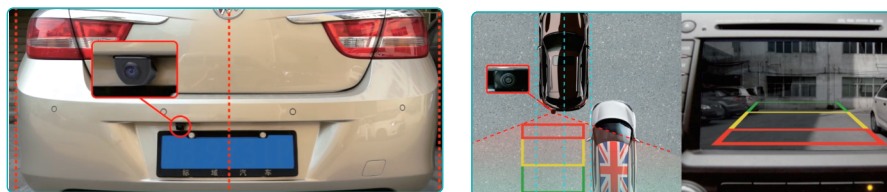
#### 4.1.1 About guide line

Generally, to help drivers estimate the distance from obstacles, there are three lines for reference - red, yellow and green. Those three lines are displayed on the monitor when car is reversing. The green line is 3m from the back of car and the yellow line is 2m. The distant red line is 1m from the backside of car while the closed red line is 0.4m. Both reference lines on the left and right should leave 0.2m space from the car.



#### 4.1.2 What the regular guide line is

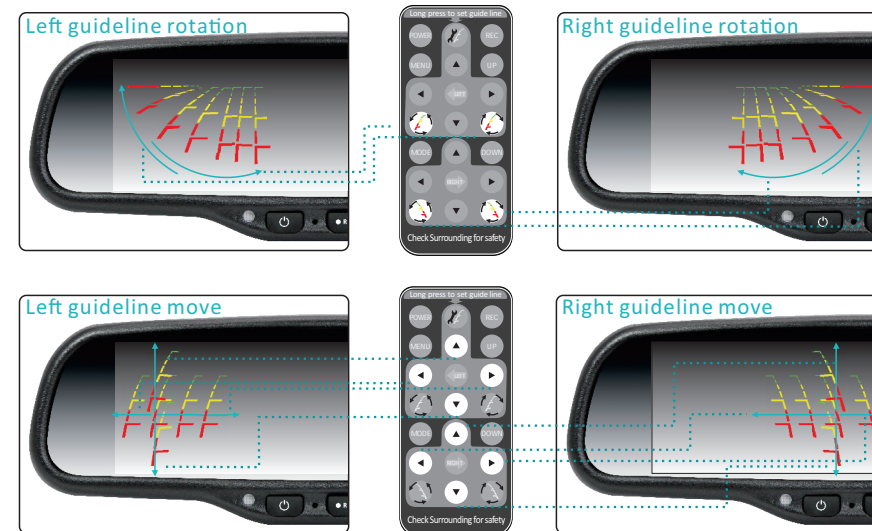
Regular guide line is fixed. But installation sites of cameras are different as well as car size. The fixed guide line is not accurate enough for drivers. There will be a great difference between regular and fixed guide lines and car's real guide lines, especially when camera is mounted on the left or right side of car backside. It may cause accidents.



#### 4.1.3 How to Adjust the guide line

According to the site of standard reference line, we can put reference objects such as desks in the back area of car. Compared with the marked reference objects, we can adjust the sites and angle of two guide lines displayed on the monitor. You will get the accurate and safety guide lines once they coincide with the reference objects.

Long press setting button is to enter into "guide line adjustment" mode. The upper half of the remote is to adjust left guide line while the bottom half of the remote is to adjust the right one. The up, down, left and right buttons are to adjust the location of guide lines. The clockwise rotation contra rotation buttons are to adjust the angle of guide lines. It is easy to operate and calibrate.





## 4.4 Dimming Functions (ONLY CV-043ADM INCLUDES)

### 4.4.1 Why need dimming function

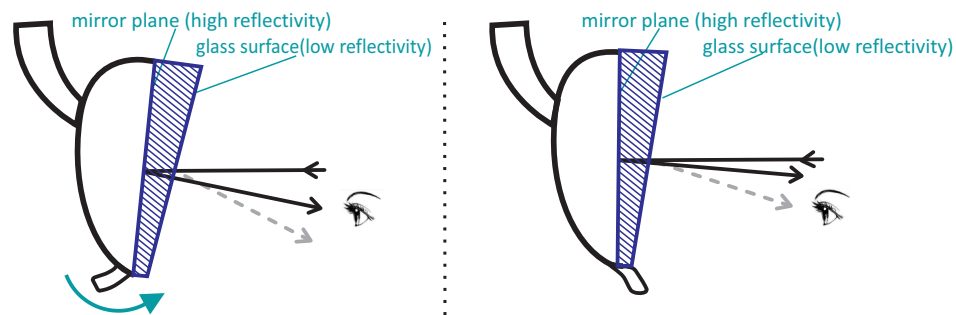
- To protect drivers from the nighttime headlight glare.
- It is a function that can improve the car safety level
- It may cause some subsequent legal disputes once removed by car dealers or sellers



### 4.4.2 manual dimming

The interior rearview mirror will reflect the glare of rearward-approaching vehicles and it shine to driver's eyes when driving at night, which would cause a serious crisis. While the manual dimming rearview mirror comes with special glass and rotating device, when the strong light comes from the back of the car, the driver only need to rotate it to another angle, that is, strong light will be reflected to another area which ensures the safe driving at night.

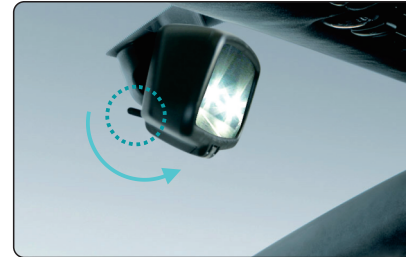
#### the reflectivity of glass surface is much lower than mirror plane



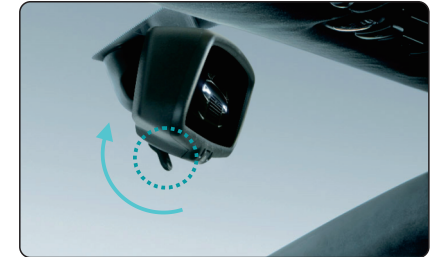
when driving car at daytime, the image from the backside car is the reflect image of the mirror, which is the same principle of cosmetic mirror.

when driving at night, there is strong light from rearward-approaching vehicles, the driver can rotate the manual shank to another angle, that is, strong light will be reflected to another area. At this moment, the image from backside car is the reflectance of glass surface.

manual-dimming bleaching state

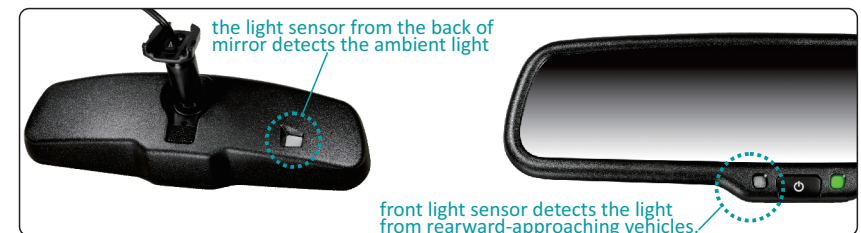


manual-dimming working state



### 4.4.2 Auto dimming

The auto-dimming of our mirror works automatically when you start the engine, then the indicator light also lights. The light sensor in the back of the rearview mirror will always detect the ambient light. The auto-dimming doesn't work in the broad day for the adequate daylight. However, when night falls and the ambient light is below 5lux, the auto-dimming starts to work and automatically dims to eliminate the glare of rearward-approaching vehicles. Furthermore, the degree of brightness of the auto-dimming glass depends on the level of the light. The stronger the light from the back of the car is, the darker the glass is. Hence it protects drivers from becoming dizzy and avoids car accident.



Auto-dimming bleaching state



Auto-dimming working state

